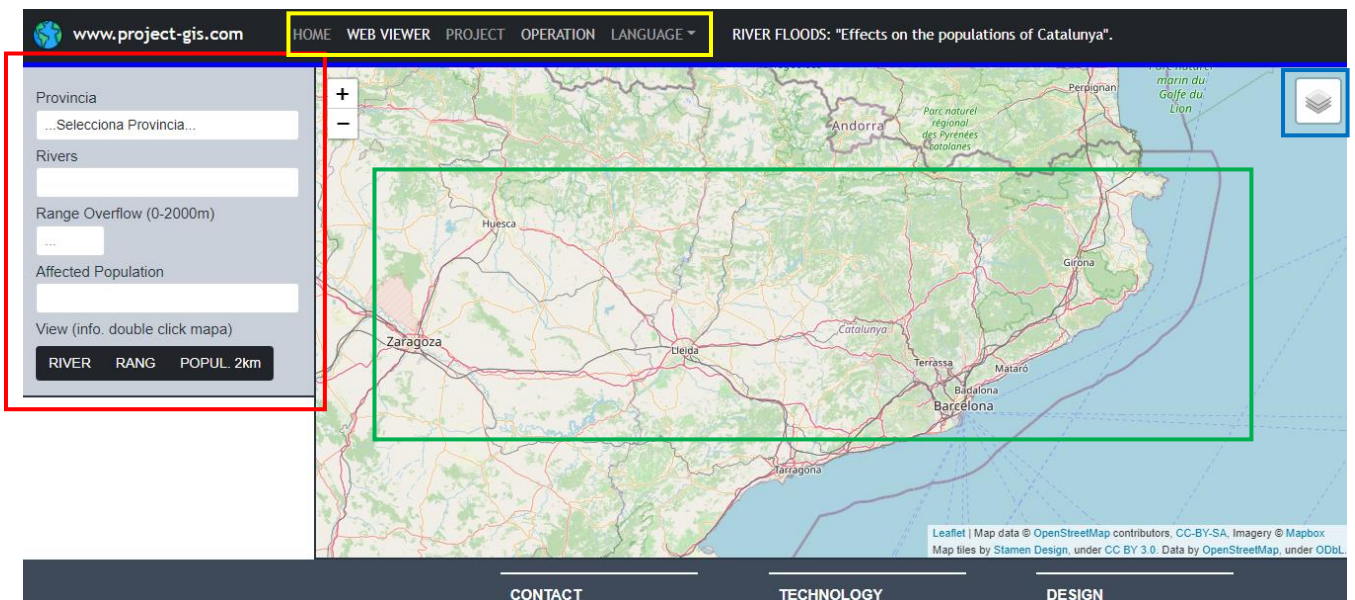


PARTS OF THE WEB VIEWER:

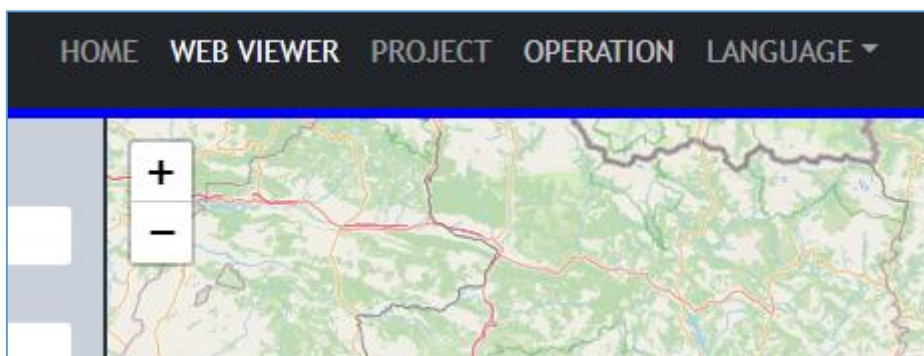
- i.) The Web Viewer has different sections structured in 4 areas:
- OTHER ITEMS** (yellow)
 - BASE MAPS** = (blue)
 - MAP** = (green)
 - MENU** = (red)



Different parts of the Web Viewer

ACCESS TO OTHER PARTS OF THE VIEWER:

- Other parts of the web viewer can be accessed from these four tabs
- **HOME** = Home of the web
- **WEB** = Web Viewer
- **PROJECT** = Explanation of the web viewer project
- **OPERATION** = PDF Operation of the viewer



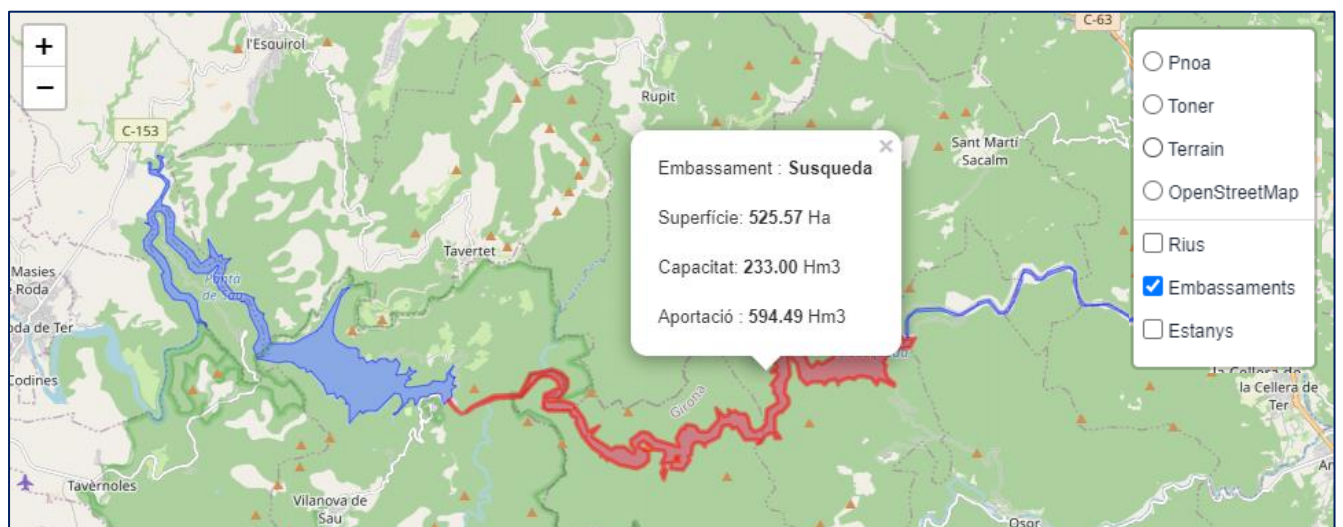
BACKGROUND LAYERS:

- We can access to 4 different base maps (WMS layers)
 - o PNOA (Orthophoto)
 - o Toner
 - o Terrain
 - o OpenStreetMap



Example of the 4 Background Base Maps

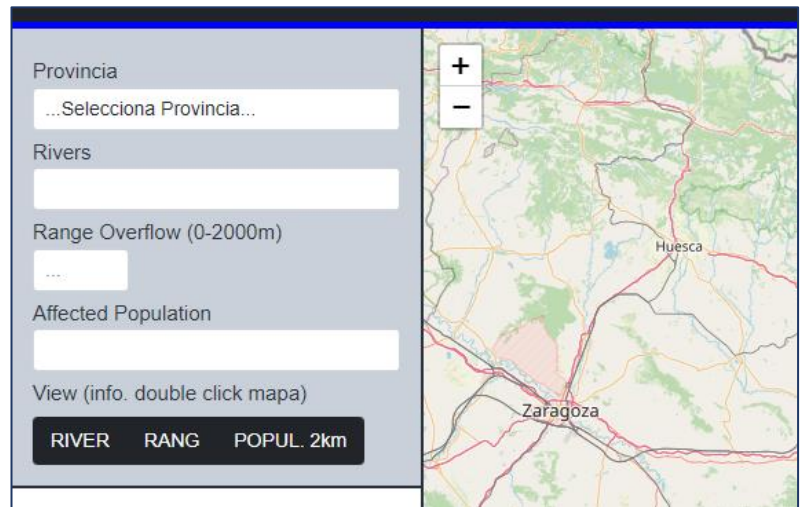
- We can access 3 different layers of the Database.
 - Rivers (Rius)**
 - Reservoirs (Embassaments)**
 - Ponds (Estanys)**



From each of the 3 layers we can obtain information by hovering the mouse over

MENU:

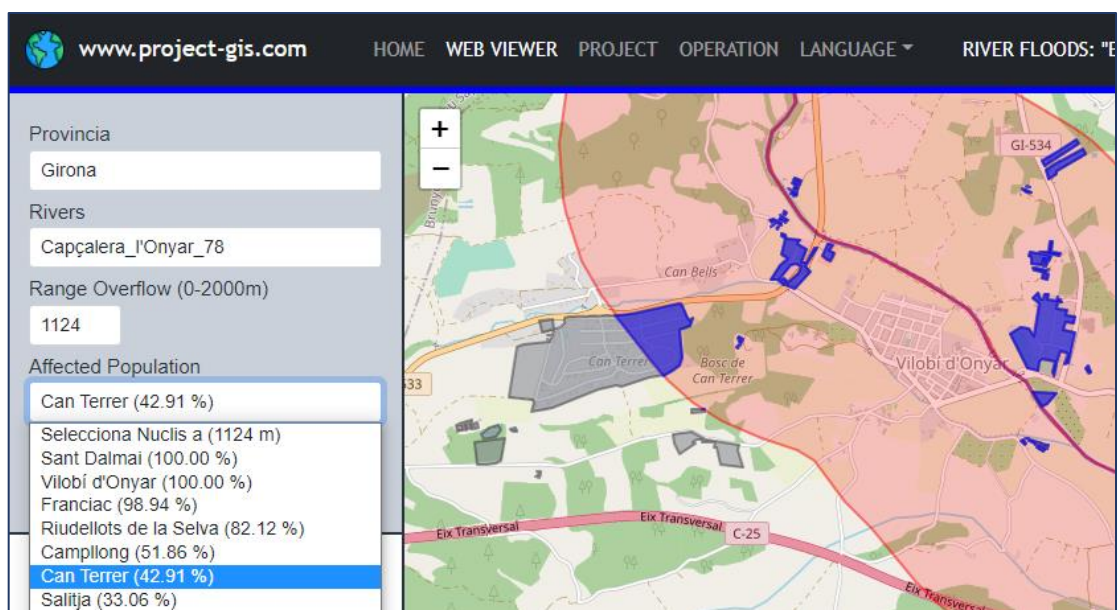
- The Menu has 5 sections
 - **PROVÍNCIA**
 - **RIVERS**
 - **RANGE**
 - **AFFECTED POPULATION**
 - **VIEW**



OPERATION:

LAYER CONTROL:

- i.) We choose a PROVINCE.
- ii.) We choose a RIVER of the province
- iii.) We choose a RANGE of river overflow:
 - i. The range has to be between 0 m and 2000 m
 - ii. If we exceed it we will get an error message.
- iv.) Once the overflow range has been chosen, the population centers affected by the overflow will appear with the % of area affected.



Selection of Province, River, Overflow Range and Affected Nucleus

DISPLAY

At any time we can visualize:

The selected river

The selected flood range

The population centers that are at a maximum of 2 km from the river.

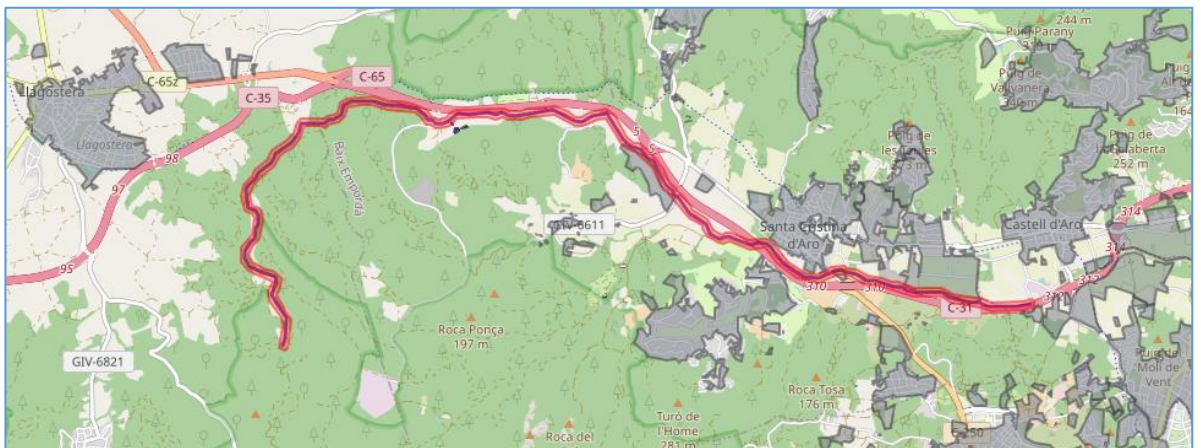
The affected population centers

Can only be displayed if there is an intersection

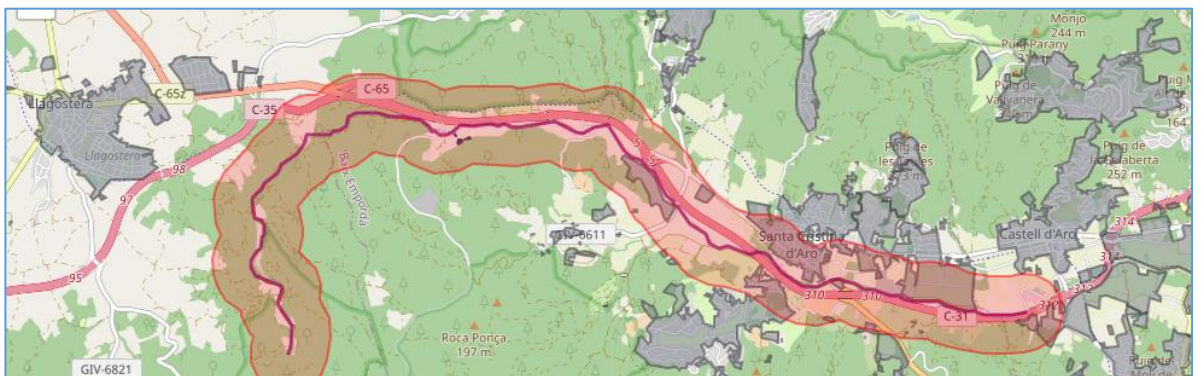
If the range of overflow is between 0 and 2000 m

EXAMPLES:

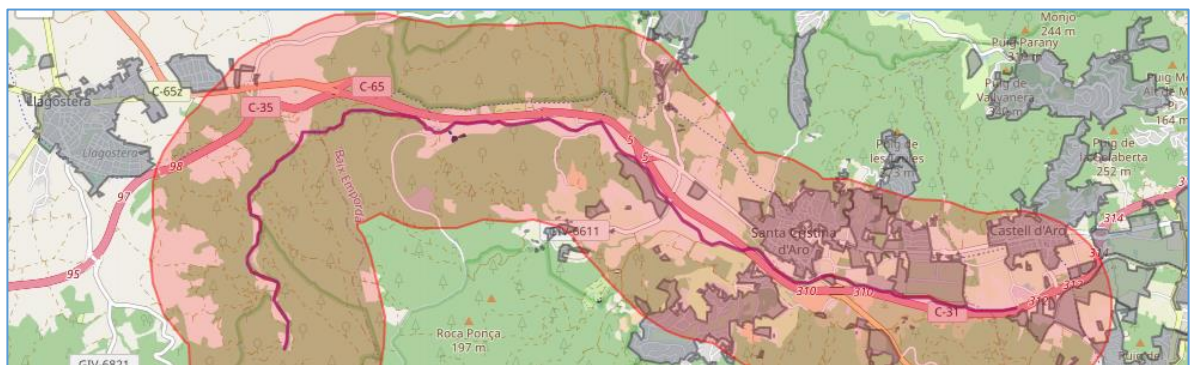
GIRONA : Headwaters of the Ridaura → EDAR de Castell-Platja d'Aro



Flood range 50 m



Flood range 450 m



Flood range 875 m

EXAMPLES:

GIRONA → Santa Cristina d'Aro (Headwaters of the Ridaura)

- Flood range 450 m
- Flood range 850 m

